



1-2-3 Go!

Want to optimize your wallboard process?

Use the new TIP900 system, a complete thermal imaging & noncontact profiling solution for real-time temperature monitoring and defect detection!

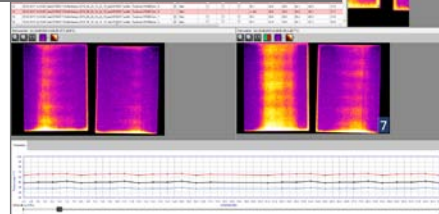
1 COMPLETE



Want a complete thermal imaging solution to monitor and analyze the temperature of your wallboard process?

- High resolution thermal imager combined with a powerful software package
- Complete hardware system configured for dusty environments
- User-friendly software with clear graphical overview on a single touch screen for local monitoring
- Network connectivity for remote communication

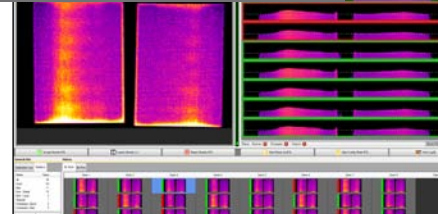
2 INTELLIGENT



Want complete visibility of your production process?

- Detailed continuous board quality monitoring
- Automated board defect detection and rejection
- Easy recipe setup
- Failure identification function tracked in database
- Database LogViewer for historical analysis also usable in other locations (remotely)

3 COST SAVER



Want a quick return on investment?

- Improves product quality & wallboard uniformity
- Increases productivity & throughput
- Reduces scrap & production downtime
- Saves operator time & labor costs
- Increases operator efficiency
- Simplifies dryer setup & control
- Allows fine tuning of production oven
- Optimizes oven temperature to save energy and fuel costs
- Prevents customer complaints

More value for you ...

- Continuous infrared monitoring to detect moisture and density variations inside each board
- More than 20 years of experience in IR thermometry dedicated to wallboard production worldwide
- Complete support from presale to post-installation